

MANDATORY **DISCLOSURE**

AICTE Application ID : 1-7003416577
AICTE Permanent ID : 1-4472401

I. NAME OF THE INSTITUTION : ROYAL COLLEGE OF ENGINEERING AND TECHNOLOGY

Address : Chiramanangad P.O., Akkikavu,
Thrissur-680604

Email : webteam@royalcet.ac.in

Telephone : +91(4885) 289009, 271121, 271122

Fax : +91(4885) 289009, 271121, 271122

II. NAME OF THE PRINCIPAL : Dr. DEVI V

Address : Chiramanangad P.O., Akkikavu,
Thrissur-680604

Email : principal@royalcet.ac.in

Telephone : 8714549416, 04855289009

Fax : +91(4885) 289009, 271121, 271122

III. NAME OF THE AFFILIATING UNIVERSITY : APJ Abdul Kalam Technological University

IV. GOVERNANCE

a. Details of Board Members

Sl No	Name of the Members	Designation
1	Mr. HUSSAIN MOHAMMED U	PRESIDENT
2	Mr. SALIM V P	GENERAL SECRETARY
3	Mr. K M HYDERALI	TREASURER
4	Mr. MOHAMED ALI C V	SENIOR VICE PRESIDENT
5	Mr. ALI C K	VICE PRESIDENT
6	Mr. MOIDUNNY N V	SECRETARY
7	Mr. V MUSTHAFA	SECRETARY
8	Mr. ASHARAF K M	EXECUTIVE DIRECTOR
9	Mr. SHAMSUDHEEN V K	DIRECTOR
10	Mr. ABDUL KADER V K	DIRECTOR
11	Mr. MOHAMED V	DIRECTOR
12	Mrs. LAILAKOYAKUTTY	DIRECTOR

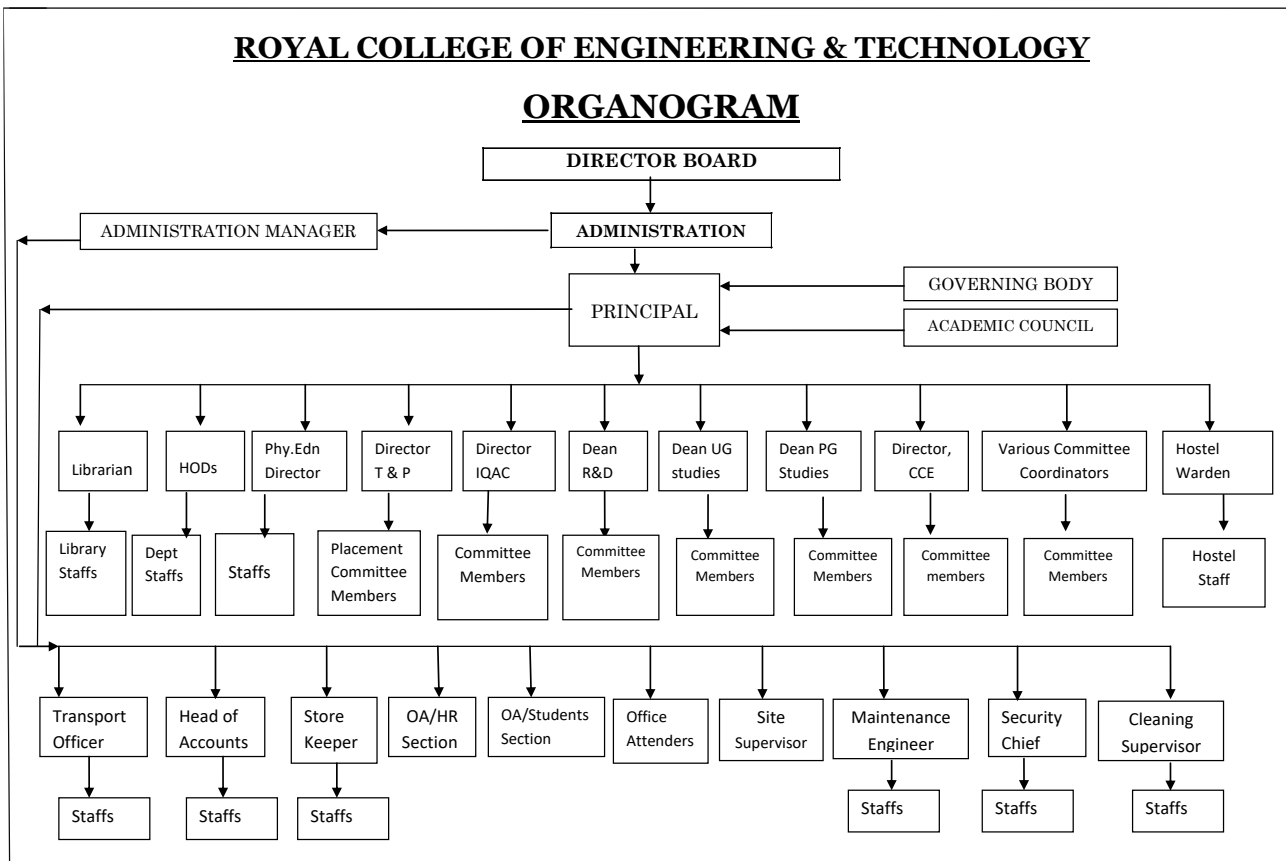
b. Details of Academic Advisory Body:

SI No	Name of the Members	Designation
1	Prof. NASSER YUNUS	Associate Professor &HOD CE
2	Prof. SHANID MALAYIL	Associate Professor & HOD CSE
3	Prof. AMRUTHA M CHEMANNUR	Associate Professor & HOD EEE
4	Prof. KRISHNAKUMAR R	Associate Professor & HOD ECE
5	Mr. RAISEN JOY	HOD ME
6	Mrs. Asheera L	HOD AS&H

c. Frequency of Board meetings : Twice in a year

Frequency of Academic Advisory body : Twice in a month

d. Organization chart and process



e. Students Feedback On:

1. Institutional Governance : The parents are accorded the status of representatives of the students and they can provide the feedback during the parents meet conducted once in a semester with regard to facilities provided to the students academic, non-academic and general in nature. The grievances are carefully looked into by the Management with sympathy and resolved with suitable actions / solutions.
2. Faculty Performance : Students are encouraged to express their grievances through a feedback form made for this purpose. This feedback is collected once in a semester on regular basis. Besides, the students can also directly approaches the principal in case of any of problems are not being met out fruitfully.

f. Grievance Redressal Mechanism

1. Students : The Principal and the HODs meet the students directly once a month and enquire them regarding the faculty performance, infrastructure, placement and training activities and other facilities required. Students at any point of time can meet the HOD Correspondent to get solved for any of their problems.
2. Faculty : The Principal and the HODs meet the faculty once in a month directly and through staff meeting to redress any grievance that may be brought by the faculty with regard to facilities provided to them and improvements in infrastructure to be established for better teaching methods and techniques.

V. PROGRAMMES :

Name of the Programme	B.Tech CE	B.Tech CSE	B.Tech ME	M.Tech CSE
Whether Approved by AICTE	Yes	Yes	Yes	Yes
No. of Seats	60	60	60	24
Duration (in Year)	4	4	4	2

VI FACULTY:

- a) Branch wise list faculty members

APPLIED SCIENCE AND HUMANITIES

1	Asheera L	Assistant Professor & Head of the Department
2	Fazil Ahammed K (L)	Assistant Professor
3	Shahida K M	Assistant Professor
4	Nimisha M (L)	Assistant Professor
5	Anu V M (ML)	Assistant Professor
6	Derin T D (L)	Assistant Professor
7	Sandhya P S	Assistant Professor
8	Bineesh K B	Assistant Professor
9	Sreevidya V R	Assistant Professor
10	Indu C	Assistant Professor
11	Nishana Jesli	Assistant Professor
12	Sruthi P S	Assistant Professor

CIVIL ENGINEERING

1	Nasser Yunus	Associate Professor & Head of the Department
2	Chinju Vijayan (Leave)	Assistant Professor
3	Athira Premkumar	Assistant Professor
4	Sabith K	Assistant Professor
5	Anu George	Assistant Professor
6	Rahul T S	Assistant Professor
7	Fawaz N M	Assistant Professor
8	Anand T M	Assistant Professor
9	Nimisha A R	Assistant Professor
10	Vismaya K	Assistant Professor

COMPUTER SCIENCE & ENGINEERING

1	Shanid Malayil	Associate professor & Head of the Department
2	Dr. Rasmi A	Associate Professor
3	Ihsana Muhammed P	Assistant Professor
4	Meera V M	Assistant Professor
5	Hima K G	Assistant Professor
6	Prajitha M V	Assistant Professor
7	Anitha L	Assistant Professor
8	Nowshad M U	Assistant Professor
9	Apsara Panicker	Assistant Professor
10	Venitha Viswanathan	Assistant Professor
11	Vijesh K	Assistant Professor
12	Sana Sahban	Assistant Professor
13	Mini Ittoop	Assistant Professor
14	Sabitha C B	Assistant Professor
15	Thulasi Mohan	Assistant Professor

ELECTRICAL AND ELECTRONICS ENGINEERING

1	Amrutha M Chemmannur	Associate Professor & HOD
2	Haridas V K	Assistant Professor
3	Able Alex (Leave)	Assistant Professor
4	Dinto Thomas	Assistant Professor
5	Anju Sam	Assistant Professor
6	Kiran P	Assistant Professor
7	Praveen K P	Assistant Professor
8	Nisha P R	Assistant Professor
9	Sarun Kumar K P	Assistant Professor

ELECTRONICS & COMMUNICATION ENGINEERING

1	Krishnakumar R	Associate Professor & HOD
2	Radhika E R	Assistant Professor
3	Vidya P (Leave)	Assistant Professor
4	Nikitha V P	Assistant Professor
5	Najiya Abdulrahiman	Assistant Professor
6	Narayanan P P (Leave)	Assistant Professor
7	Pradosh Kumar P (Leave)	Assistant Professor
8	Savitha Vasudevan	Assistant Professor
9	Sruthy K Suresh (ML)	Assistant Professor
10	Rubina K A	Assistant Professor
11	Shiji K	Assistant Professor
12	Sreedevi K	Assistant Professor
13	Jomon K Charly	Assistant Professor
14	Yasar Moidutty	Assistant Professor
15	Fasna K K	Assistant Professor
16	Remya Rajendran	Assistant Professor
17	Athira Sankar	Assistant Professor
18	Shefina Ashraf	Assistant Professor

MECHANICAL ENGINEERING

1	Raisen Joy	Assistant Professor & HOD
2	Dileepan Balakrishnan	Assistant Professor
3	Ajeesh Karippath	Assistant Professor
4	Mr. Abu K A	Workshop Superintendent
5	Neethu P (ML)	Assistant Professor
6	Gopi Krishna N	Assistant Professor
7	Leo A J	Assistant Professor
8	Geno John K	Assistant Professor
9	Yoosaf P P	Assistant Professor
10	Aghana E L	Assistant Professor
11	K A Sandeep	Assistant Professor
12	Sajeesh N	Assistant Professor
13	Sruthy Menon	Assistant Professor
14	Leo Mathew	Assistant Professor

PHYSICAL EDUCATION

Mr Bijeeesh P

Head of the Department

LIBRARY

Mr. Sudev K

Librarian

b) Number of faculty employed and left during the last three years:

	2020-21	2019-20	2018-19
No. of Faculty Employed	86	89	96
No. of Faculty Left	14	39	24

VII. FEE DETAILS:

a. Details of fee, as approved by state fee committee for Govt. Quota

Course	Govt. Quota	Mgt. Quota	NRI. Quota
B.Tech	As per Government Norms		
M.Tech			

- Time schedule for payment of fee for : At the commencement the entire programme of each semester (or) commencement of the academic year – optional
- b. Details of Scholarship offered by the Institute : E-Grantz, MOMA, Pragathi, Fisheries, CH Mohammed Koya, Central Sector, Govt. Of India, Ramanathan Endowment
- c. No. of Scholarship : 10
- Duration : One Year
- Amount :
- Criteria / Eligibility for Scholarship : Based on Merit, Mark and Income

VIII. ADMISSION

SL.No	Branch	Year of Approval	Intake	Increase in Intake with Year	Total	Decrease in Intake with Year	Closure	Total
1	AEI	2003-2004	60	0	60	0	60 (2017-2018)	0
2	CE	2003-2005	60	0	0	0	Nil	60
3	CSE	2003-2006	60	60 (2010-2011)	120	60 (2020-2021)	Nil	60
4	ECE	2003-2007	60	60 (2011-2012)	120	60 (2018-2019)	60 (2020-2021)	0
5	EEE	2010-2011	60	0	60	0	60 (2020-2021)	0
6	ME	2011-2012	60	60 (2013-2014)	120	60 (2020-2021)	Nil	60

IX. ADMISSION PROCEDURE:

Name of the Admission tests conducted for students in Management and Government Quota:

1. Kerala Entrance test conducted by Government of Kerala
2. CALIDAD Entrance exam conducted by Royal College of Engineering and Technology

X. CRITERIA AND WEIGHTAGES FOR ADMISSION

Marks obtained in Mathematics, Physics & Chemistry of HSC Examination

XI. APPLICATION FORM : Available in website <http://royalcet.ac.in/>

XII. INFORMATION ON INFRASTRUCTURE & OTHER RESOURCES:

Administrative Area

Room No.	Room Type	Carpet area in sqm	Completion of Flooring	Completion of Walls and painting	Completion of Electrification and lightng
1	Security	11	Completed	Completed	Completed
100	Reception Area	50	Completed	Completed	Completed
101	Other Office	25	Completed	Completed	Completed
102	Office All Inclusive	247	Completed	Completed	Completed
102A	Central Store	25	Completed	Completed	Completed
102B	Pantry for Staff	25	Completed	Completed	Completed
115	Maintenance	77	Completed	Completed	Completed
121	Cabin for Head of Dept	25	Completed	Completed	Completed
121A	Department Office	22	Completed	Completed	Completed
121B	Faculty Room	125	Completed	Completed	Completed
129	Office All Inclusive	270	Completed	Completed	Completed
129A	Principal Directors Office	40	Completed	Completed	Completed
209	Board Room	24	Completed	Completed	Completed
210	Office All Inclusive	252	Completed	Completed	Completed
212	Placement Office	98	Completed	Completed	Completed

218	Exam Control Office	53	Completed	Completed	Completed
227	Cabin for Head of Dept	20	Completed	Completed	Completed
227A	Department Office	26	Completed	Completed	Completed
230	Faculty Room	134	Completed	Completed	Completed
230A	Cabin for Head of Dept	20	Completed	Completed	Completed
240	Central Store	46	Completed	Completed	Completed
243	Faculty Room	28	Completed	Completed	Completed
244	Faculty Room	14	Completed	Completed	Completed
245	Faculty Room	14	Completed	Completed	Completed
246	Department Office	29	Completed	Completed	Completed
306	Faculty Room	90	Completed	Completed	Completed
307	Cabin for Head of Dept	38	Completed	Completed	Completed
313	Housekeeping	11	Completed	Completed	Completed
314	Faculty Room	32	Completed	Completed	Completed
315	Faculty Room	107	Completed	Completed	Completed
319	Cabin for Head of Dept	20	Completed	Completed	Completed
319A	Department Office	15	Completed	Completed	Completed
320	Faculty Room	49	Completed	Completed	Completed
321	Faculty Room	40	Completed	Completed	Completed
412	Pantry for Staff	11	Completed	Completed	Completed
418	Faculty Room	30	Completed	Completed	Completed
EEE102A	Cabin for Head of Dept	20	Completed	Completed	Completed
EEE102B	Faculty Room	55	Completed	Completed	Completed
EEE301	Faculty Room	102	Completed	Completed	Completed
ME101	Faculty Room	24	Completed	Completed	Completed
ME102	Faculty Room	24	Completed	Completed	Completed
ME201	Faculty Room	24	Completed	Completed	Completed
ME202	Faculty Room	24	Completed	Completed	Completed
ME207	Department Office	24	Completed	Completed	Completed
ME208B	Cabin for Head of Dept	52	Completed	Completed	Completed
ME301	Faculty Room	24	Completed	Completed	Completed

Total Administrative Area : 2516

Amenities Area

Room No.	Room Type	Carpet area in sqm	Completion of Flooring	Completion of Walls and painting	Completion of Electrification and lightng
1	Cafeteria	400	Completed	Completed	Completed
100	Auditorium	750	Completed	Completed	Completed
100A	Toilet	64	Completed	Completed	Completed
100B	Toilet	64	Completed	Completed	Completed
104	First aid cum Sick Room	22	Completed	Completed	Completed
200	Boys Common Room	100	Completed	Completed	Completed
200A	Toilet	64	Completed	Completed	Completed

200B	Toilet	64	Completed	Completed	Completed
233	Student activity / GCR	11	Completed	Completed	Completed
234	Others	11	Completed	Completed	Completed
240	Stationery Store	23	Completed	Completed	Completed
300	Girls Common Room	100	Completed	Completed	Completed
300A	Toilet	64	Completed	Completed	Completed
300B	Toilet	64	Completed	Completed	Completed
314	Sports Club	11	Completed	Completed	Completed
400A	Toilet	64	Completed	Completed	Completed
400B	Toilet	64	Completed	Completed	Completed
BH	Boys' Hostel	1623	Completed	Completed	Completed
LH	Girls' Hostel	2378	Completed	Completed	Completed

Total Amenities Area : 5941

Circulation Area

Room No.	Room Type	Carpet area in sqm	Completion of Flooring	Completion of Walls and painting	Completion of Electrification and lightng
	Corridors	3,656	Completed	Completed	Completed
	Other Areas	125	Completed	Completed	Completed
	Other Common Area	260	Completed	Completed	Completed

Total Circulation Area : 4,041

Instructional Area

Room No.	Room Type	Carpet area in sqm	Completion of Flooring	Completion of Walls and painting	Completion of Electrification and lightng
119	Laboratory	75	Completed	Completed	Completed
119A	Laboratory	75	Completed	Completed	Completed
121C	Tutorial Room	75	Completed	Completed	Completed
123	Laboratory	153	Completed	Completed	Completed
124	Classroom	76	Completed	Completed	Completed
125	Classroom	76	Completed	Completed	Completed
126	Classroom	76	Completed	Completed	Completed
127	Classroom	76	Completed	Completed	Completed
201	Classroom	72	Completed	Completed	Completed
202	Tutorial Room	75	Completed	Completed	Completed
205	Tutorial Room	75	Completed	Completed	Completed
206	Classroom	70	Completed	Completed	Completed
214	Laboratory	98	Completed	Completed	Completed
215	Laboratory	101	Completed	Completed	Completed
216	Laboratory	98	Completed	Completed	Completed

217	Tutorial Room	75	Completed	Completed	Completed
219A	Tutorial Room	33	Completed	Completed	Completed
219B	Laboratory	84	Completed	Completed	Completed
220	Classroom	74	Completed	Completed	Completed
221	Classroom	74	Completed	Completed	Completed
223	Classroom	74	Completed	Completed	Completed
224	Classroom	74	Completed	Completed	Completed
225	Laboratory	76	Completed	Completed	Completed
228	Laboratory	119	Completed	Completed	Completed
228A	Laboratory	75	Completed	Completed	Completed
229	Laboratory	75	Completed	Completed	Completed
229A	Laboratory	77	Completed	Completed	Completed
238	Laboratory	75	Completed	Completed	Completed
239	Laboratory	75	Completed	Completed	Completed
239A	Laboratory	75	Completed	Completed	Completed
242	Laboratory	97	Completed	Completed	Completed
301	Classroom	73	Completed	Completed	Completed
302	Classroom	74	Completed	Completed	Completed
308	Laboratory	75	Completed	Completed	Completed
308A	Laboratory	75	Completed	Completed	Completed
309	Laboratory	75	Completed	Completed	Completed
309A	Laboratory	75	Completed	Completed	Completed
310	Seminar Hall	230	Completed	Completed	Completed
317	Laboratory	157	Completed	Completed	Completed
318	Laboratory	80	Completed	Completed	Completed
318A	Laboratory	87	Completed	Completed	Completed
322	Classroom	75	Completed	Completed	Completed
323	Tutorial Room	75	Completed	Completed	Completed
325	Classroom	77	Completed	Completed	Completed
326	Classroom	75	Completed	Completed	Completed
401	Tutorial Room	74	Completed	Completed	Completed
402	Laboratory	74	Completed	Completed	Completed
404	Research Laboratory	74	Completed	Completed	Completed
405	Tutorial Room	74	Completed	Completed	Completed
409	Laboratory	75	Completed	Completed	Completed
409A	Laboratory	75	Completed	Completed	Completed
410	Seminar Hall	150	Completed	Completed	Completed
414	Drawing Hall	150	Completed	Completed	Completed
415	Drawing Hall	150	Completed	Completed	Completed
416	Laboratory	109	Completed	Completed	Completed
417	Laboratory	113	Completed	Completed	Completed
419	Laboratory	76	Completed	Completed	Completed
420	Classroom	73	Completed	Completed	Completed
421	Classroom	73	Completed	Completed	Completed
422	Tutorial Room	76	Completed	Completed	Completed
EEE101	Laboratory	210	Completed	Completed	Completed

EEE103	Laboratory	89	Completed	Completed	Completed
EEE201A	Laboratory	73	Completed	Completed	Completed
EEE201B	Laboratory	73	Completed	Completed	Completed
EEE202	Seminar Hall	73	Completed	Completed	Completed
EEE203	Laboratory	73	Completed	Completed	Completed
EEE302	Tutorial Room	73	Completed	Completed	Completed
EEE303	Classroom	73	Completed	Completed	Completed
EEE304	Classroom	73	Completed	Completed	Completed
EEE305	Classroom	73	Completed	Completed	Completed
ME103	Classroom	80	Completed	Completed	Completed
ME104	Laboratory	152	Completed	Completed	Completed
ME203	Classroom	80	Completed	Completed	Completed
ME204	Classroom	80	Completed	Completed	Completed
ME205	Laboratory	116	Completed	Completed	Completed
ME206	Classroom	80	Completed	Completed	Completed
ME303	Laboratory	80	Completed	Completed	Completed
ME304	Classroom	80	Completed	Completed	Completed
ME305	Tutorial Room	80	Completed	Completed	Completed
ME306	Tutorial Room	80	Completed	Completed	Completed
ME307	Seminar Hall	110	Completed	Completed	Completed
WS103	Laboratory	75	Completed	Completed	Completed
WS104	Laboratory	75	Completed	Completed	Completed
WS105	Laboratory	75	Completed	Completed	Completed
WS106	Laboratory	38	Completed	Completed	Completed
WS107	Laboratory	75	Completed	Completed	Completed
WS108	Laboratory	75	Completed	Completed	Completed
WS109	Laboratory	35	Completed	Completed	Completed
WS110	Workshop	220	Completed	Completed	Completed
WS111	Additional Workshop	230	Completed	Completed	Completed

Instructional Area - Common Facilities

Room No.	Room Type	Carpet area in sqm	Completion of Flooring	Completion of Walls and painting	Completion of Electrification and lightng
109	Library&Reading Room	622	Completed	Completed	Completed
120	Computer Center	150	Completed	Completed	Completed
213	Language Laboratory	100	Completed	Completed	Completed
237	Library&Reading Room	70	Completed	Completed	Completed
246	Library&Reading Room	31	Completed	Completed	Completed
ME302	Library&Reading Room	52	Completed	Completed	Completed

Total Instructional Area 9046

A) LIBRARY

Particulars	e-Journal (National)	e-Journal (International)	Journal (International)	Journal (National)	Book
No. of Titles	698	161	5	43	6919
No. of Volumes	-	-	-	-	27849
E-Library Facility	DELNET, IETE				

B) COMPUTING FACILITIES:

- | | |
|---|-----|
| 1. Total No: of computers | 563 |
| 2. Total No: of printers | 31 |
| 3. No. of Licensed Application software | |
| 4. No. of Licensed System Software | 03 |

Internet Connection Details

Provider	Bandwidth(Mbps)	Connection Type
BSNL	40	Leased Line
KERALAVISION	40	Broadband

XII.EXTRA CURRICULUM ACTIVITIES

1. Games and Sports Facilities

The college has facilities for the students to participate in various Game and Sports activities such as Foot Ball, Volley Ball, Ball Badminton, Basket Ball, Shot-put, Discus and Javelin Throw, Chess, Carom, Table Tennis and Cricket.

2. The college has involved the students in various extra-curricular activities through NSS programs. The NSS has performed the following activities.

1. Conducted various training programs for the peer educators.
2. Conducted Blood Donation Camps.
3. Conducted Seminar on `Health and Hygiene`
4. Contributed dress materials to the orphans.
5. Conducted Energy Conservation & awareness programs.
6. Created awareness on the wealth of trees & Plants & forest.

3. Soft Skill Development Facilities :

The training Department conducts regular training modules on soft skills for the final year and pre-final year students of the college to help them to improve their performance during campus selection drive conducted by the companies in IT / Software Sector. The Training is done on the following areas.

1. English Language Communication Skills – Verbal, Vocabulary and Presentation aspects.
2. Reasoning Skills – Logical, Analytical, etc.
3. Quantitative Skills – Numeric and Arithmetic
4. Group Discussion Skills
5. Mock Interview Sessions
6. General Information on the current trends in the Industry and job related information inputs.

XIV) Teaching Learning Process

i) Curriculum and Syllabi for each programme :

As per

1. APJ Abdul Kalam Technological University

ii) Internal Continuous Evaluation System : Internal marks are awarded based on the guidelines given the university